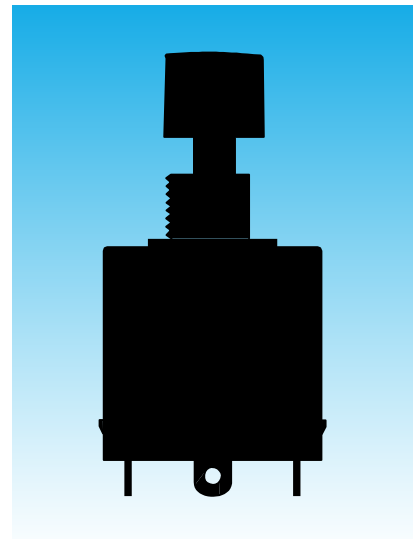
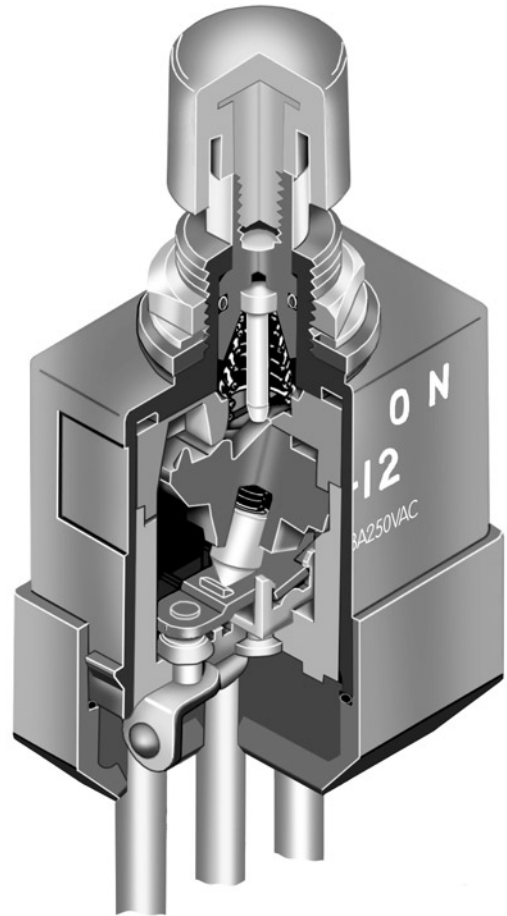


UL94V-0

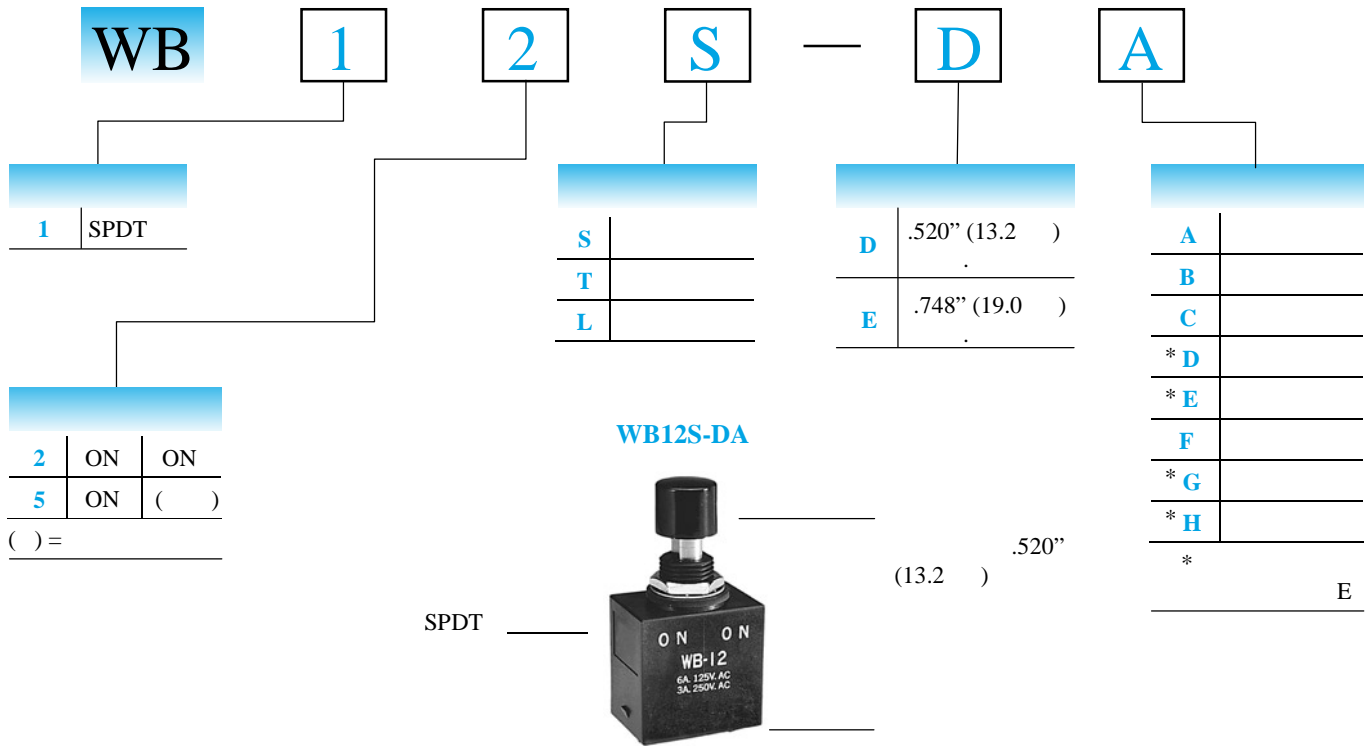
IP67 ( IEC60529 )  
 IP60 ( )

IP67 ( IEC60529 )

( )



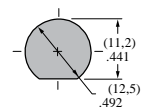
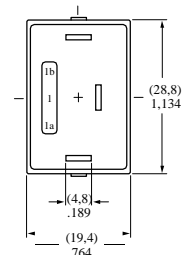
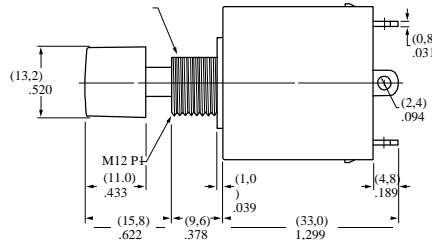
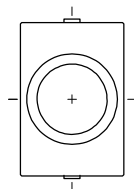
: ( 6A ) 125 3A 250 6A  
 : 30  
 : 10 & ;  
 : 30  
 : 200 500  
 : 1 500 1 ;  
 : 30 000  
 : 15 000  
 :  
 : .177" (4.5 ) ; .110" (2.8 )  
 :  
 : (UL94V-0, )  
 :  
 :  
 :  
 :  
 :  
 : ( AWG 16)  
 :  
 : -30°C +70°C  
 : 90 ~ 95% 96 40°C  
 : 10 ~ 55 1.5 1 ; 3  
 : 50 G (490 / 2) ( , 5 )  
 :  
 : 1.5  
 : : A " "  
 :  
 : UL94V-0  
 : UL AWM 1015 VW-1; -20°C ~ +105°C;  
 : 600 ; AWG 16. CSA TEW 105  
 : -20°C ~ +105°C; 600



SP	<b>WB12</b>			1-1b	1-1a	SPDT
SP	<b>WB15</b>		( )	1-1b	1-1a	

UL 1015 CSA TEW 105 (AWM).

	<b>1a</b>	<b>1</b>	<b>1b</b>
WB12L, WB15L			

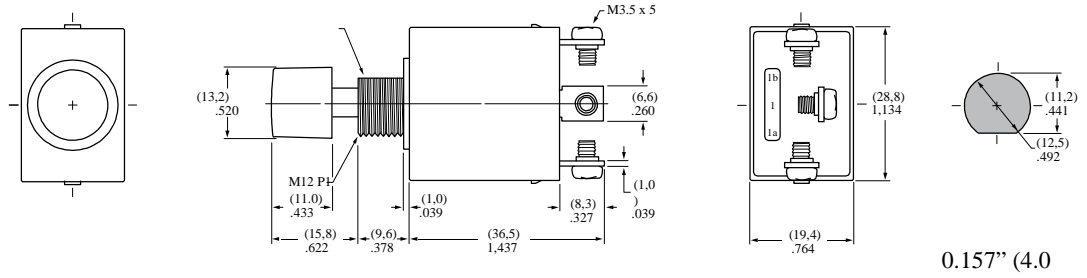


0.157" (4.0 )

**WB15S-DA**



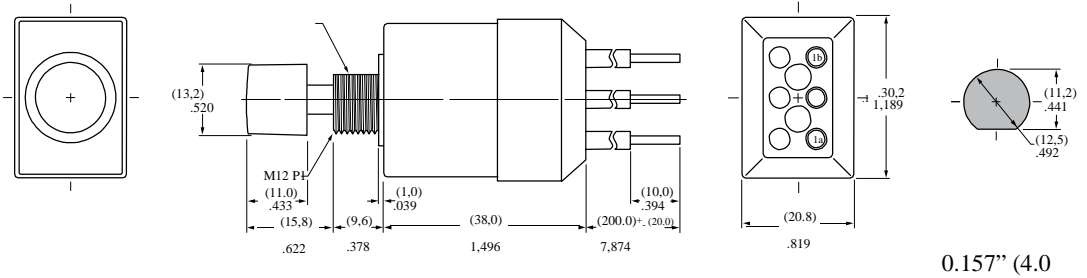
**WB12T-DA**



0.157" (4.0 )



**WB12L-DA**



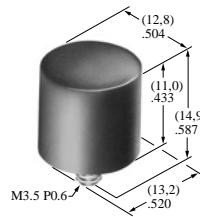
0.157" (4.0 )



**AT414**

.520" (13.2 )

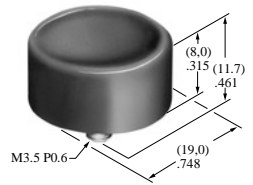
A B C D E F G H



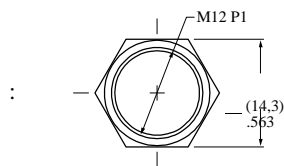
**AT412**

.748" (19.0 )

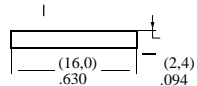
A B C F



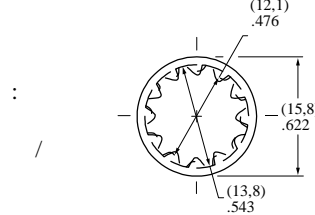
**AT503M**



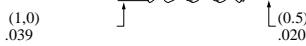
1



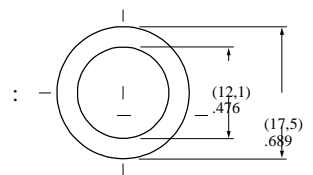
**AT508**



1



**AT401P**



1

